

Critical Needs: How Indiana's Health Workforce Can Impact Infant Mortality

2018 Health Workforce Summit

May 22, 2018

Kris Box, MD, FACOG
Indiana State Health Commissioner



Indiana State
Department of Health

Introduction

- Terre Haute native
- Dental family
- OB/GYN for 30 years
- Passion for mission trips
- State health commissioner since October 2017



Infant Mortality Defined

- The death of a baby before his/her first birthday
- The Infant Mortality Rate (IMR) is an estimate of the number of infant deaths for every 1,000 live births
- Large disparities in infant mortality in Indiana and the United States exist, especially among race and ethnicity.

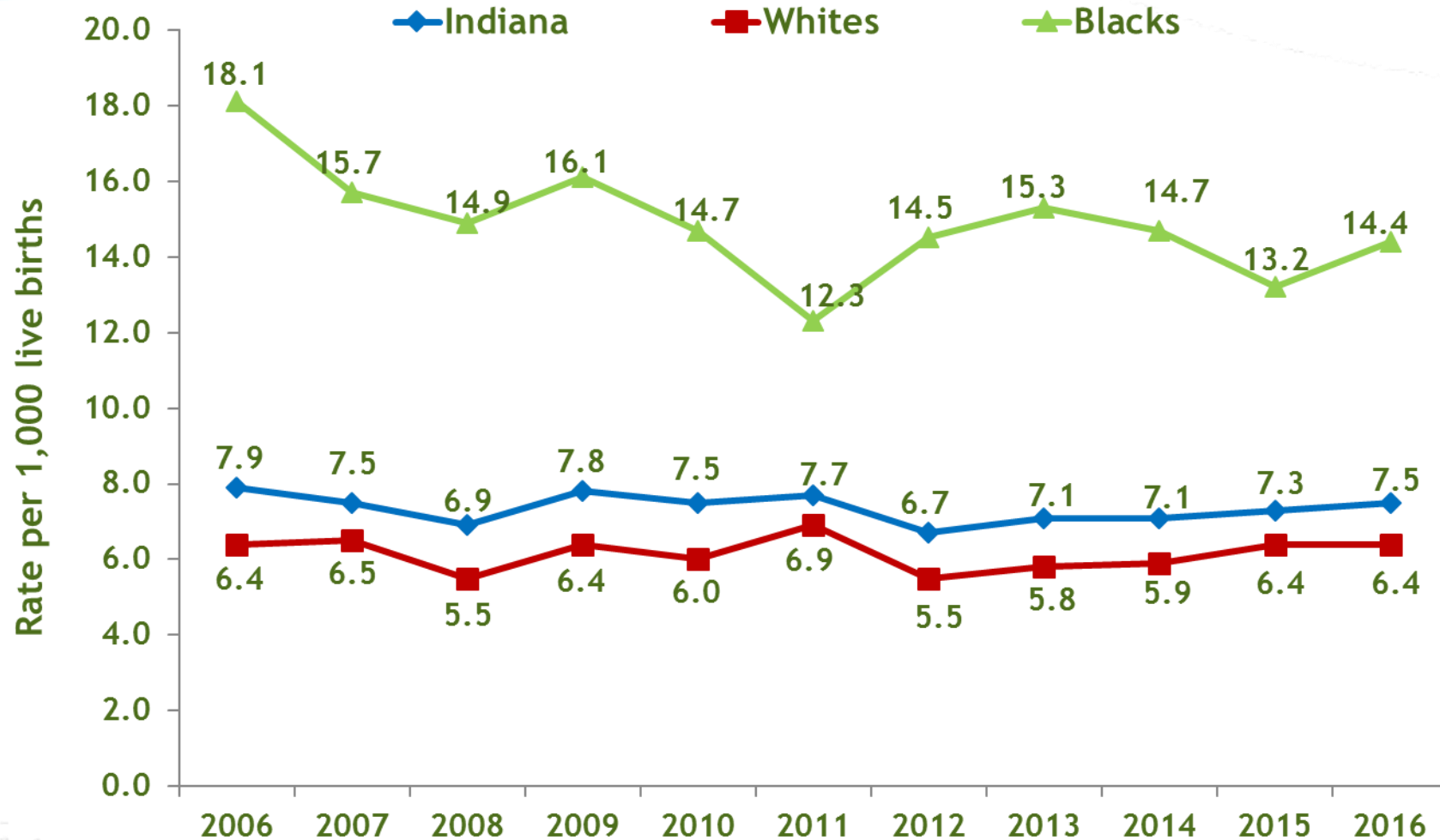
**Infant Mortality is the
#1 indicator of health
status in the world**



Infant Mortality in Indiana

- 623 Indiana babies died before their 1st birthday in 2016
 - More than 50 babies EVERY month
 - Nearly 12 babies EVERY week
- Nearly 3,000 infant lives lost in the last 5 years
 - Nearly 42 school buses at maximum capacity
- Large disparities in infant mortality in IN and the US, especially among race and ethnicity

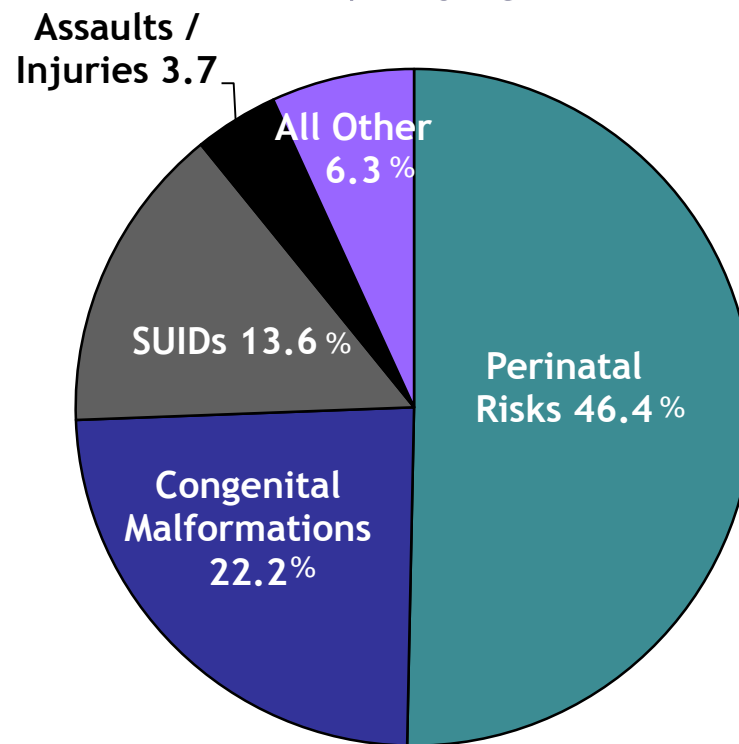
Indiana Infant Mortality Rates by Race, 2006 - 2016



Source: Indiana State Department of Health, Maternal & Child Health Epidemiology Division [January 5, 2018]
Indiana Original Source: Indiana State Department of Health, PHPC, ERC, Data Analysis Team

Infant Mortality Distribution by Cause Indiana 2016

% Distribution of Infant Deaths
N = 623



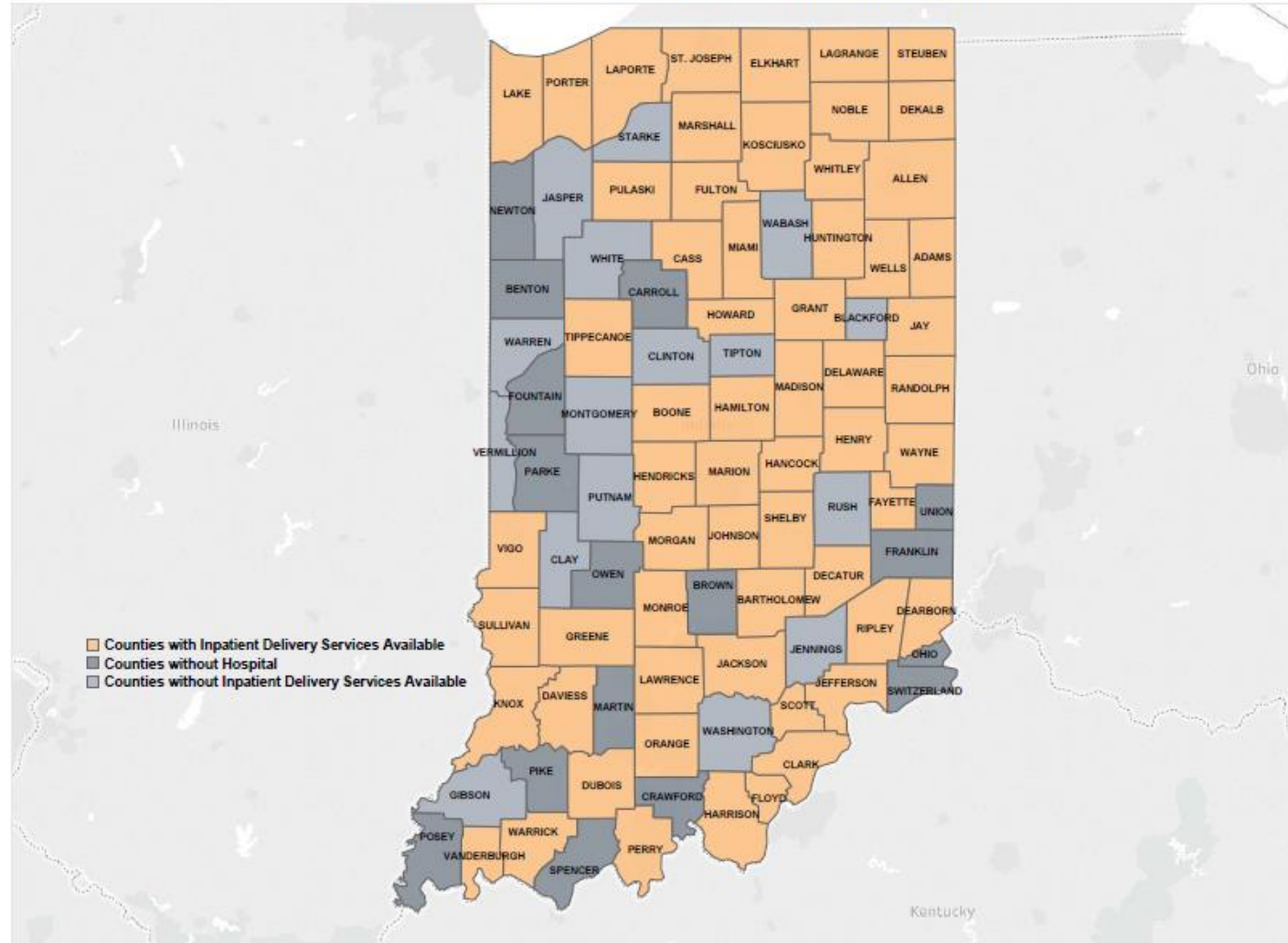
2012 – 2016 Infant Mortality Rates by ZIP Code

Zip Code	County	Births	Deaths	Infant Mortality Rate (IMR)	White IMR	Black IMR
46312	Lake	2,417	40	16.5	12.8*	25.8
46806	Allen	2,335	37	15.8	12.0*	24.0
46324	Lake	1,429	21	14.7	16.1*	19.6*
47302	Delaware	1,795	24	13.4	12.8	**
46619	St. Joseph	1,670	22	13.2	4.6*	21.2*
46226	Marion	3,532	46	13.0	6.0*	15.1
46205	Marion	2,394	30	12.5	10.7*	14.1*
46203	Marion	3,206	40	12.5	10.7	13.9*
46218	Marion	2,505	31	12.4	**	15.6
46229	Marion	1,978	23	11.6	**	15.3*
46947	Cass	2,000	22	11.0	8.3*	**
46201	Marion	2,872	30	10.4	5.4*	17.8*
46235	Marion	3,245	33	10.2	6.4*	11.3

*Numerator less than 20, the rate is unstable.

**Rate has been suppressed due to five or fewer outcomes.

Inpatient Hospital Obstetric Services by Indiana County

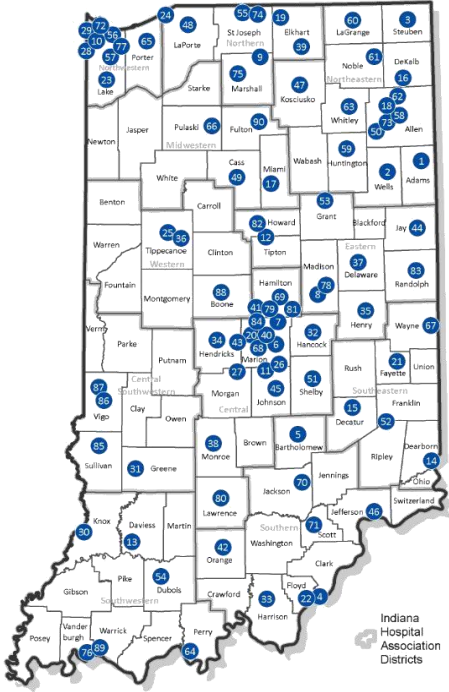


Source: Indiana Hospital Association, February 2018

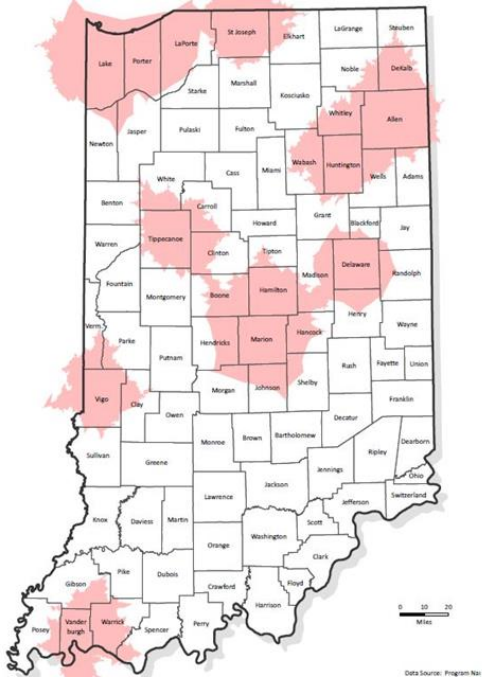
Infant Mortality: Indiana's Plan

- Governor Holcomb's charge: Have lowest rate in Midwest by 2024
- How we get there:
 - Perinatal Levels of Care
 - Obstetrical Care/Coordination
 - HIP 2.0
 - Nurse Family Partnership
 - Paramedicine
 - Community Health Workers
 - Access to Care Rural Areas/RN midwives, APRN
 - LARC
 - Identify Prior Preterm Birth
 - I.M. progesterone 16-24 weeks
 - Vaginal progesterone
 - Cerclage
 - Hypertension Baby ASA decrease severe pre-eclampsia
 - Safe Sleep education
 - Cribs for Kids
 - Direct On-Scene Education (DOSE) training for first responders
 - Decrease Maternal Smoking
 - Increase % women breastfeeding at time of discharge
 - SUD/Neonatal Abstinence Syndrome

Perinatal Levels of Care

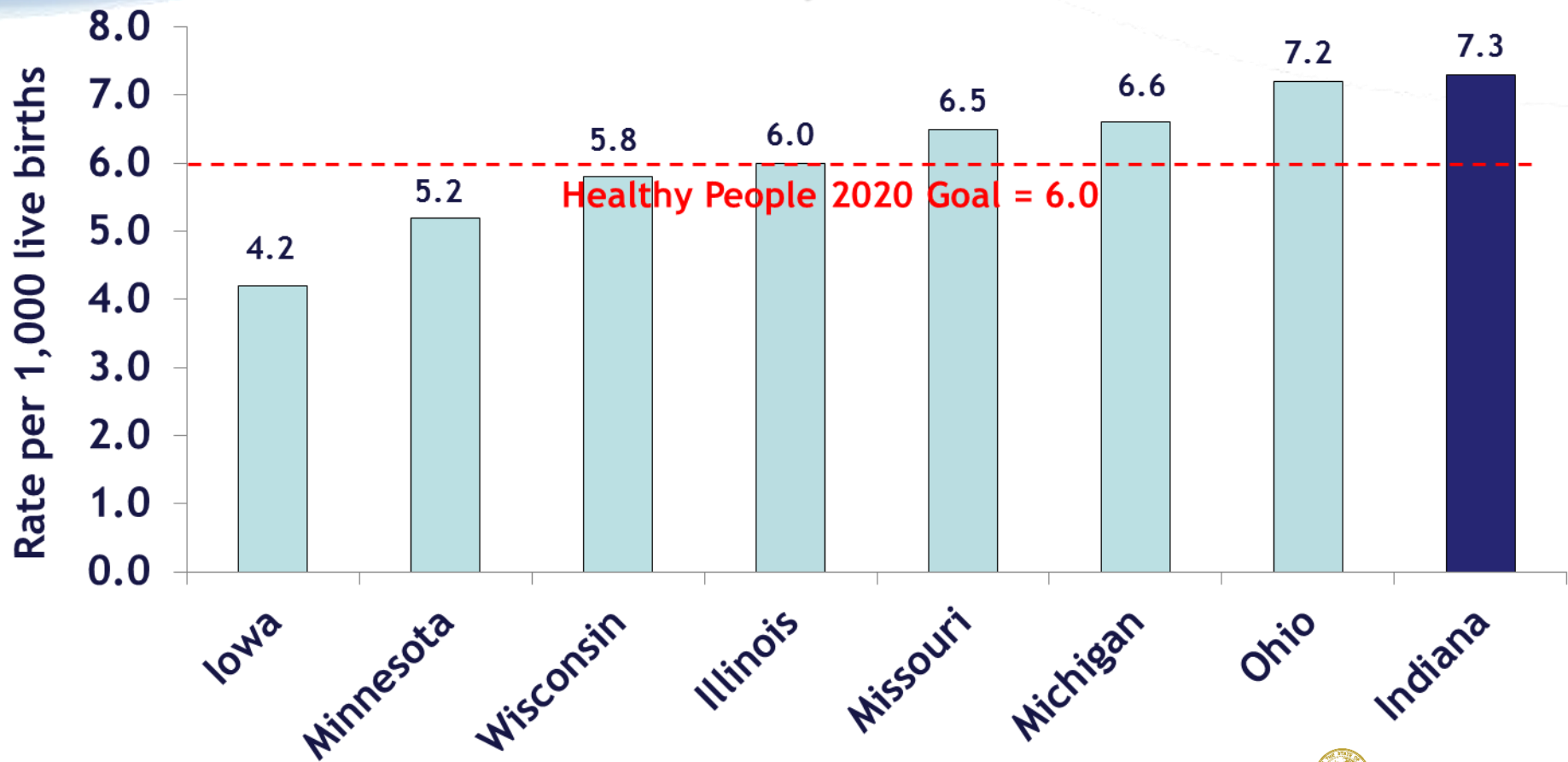


Location of birthing hospitals



Identifies 30 minutes service areas of Level 3 birthing hospitals. Level 3 facilities are the most equipped to care of at-risk babies.

Infant Mortality Rates Midwest, 2015



Source: Indiana State Department of Health, Division of Maternal and Child Health [February 26, 2018]
Data Source: Centers for Disease Control and Prevention, National Center for Health Statistics, National Vital Statistics Report "Deaths: Final Data for 2015" Volume 66, Number 6

Your Turn

What do I need to know from you?

