



Pediatric decision support using adapted arden syntax

Vibha Anand^a, Aaron E. Carroll^{b,c}, Paul G. Biondich^{c,d}, Tamara M. Dugan^d, and Stephen M. Downs^{c,d}

^aChildren's Hospital and Pediatric Institute, Cleveland Clinic, 9500 Euclid Avenue, Cleveland, OH 44195, USA

^bPediatric and Adolescent Comparative Effectiveness Research, Indiana University, Riley Child Development Center, 705 Riley Hospital Drive, Room 5837, Indianapolis, IN 46202, USA

^cRegenstrief Institute, Inc., 410 West 10th Street, Suite 2000, Indianapolis, IN 46202-3012, USA

^dChildren's Health Services Research, Indiana University, 410 West 10th Street, Suite 1000, Indianapolis, IN 46202-3012, USA

Abstract

Background—Pediatric guidelines based care is often overlooked because of the constraints of a typical office visit and the sheer number of guidelines that may exist for a patient's visit. In response to this problem, in 2004 we developed a pediatric computer based clinical decision support system using Arden syntax medical logic modules (MLM).

Methods—The Child Health Improvement through Computer Automation system (CHICA) screens patient families in the waiting room and alerts the physician in the exam room. Here we describe adaptation of Arden Syntax to support production and consumption of patient specific tailored documents for every clinical encounter in CHICA and describe the experiments that demonstrate the effectiveness of this system.

Results—As of this writing CHICA has served over 44,000 patients at 7 pediatric clinics in our healthcare system in the last decade and its MLMs have been fired 6,182,700 times in “produce” and 5,334,021 times in “consume” mode. It has run continuously for over 10 years and has been used by 755 physicians, residents, fellows, nurse practitioners, nurses and clinical staff. There are 429 MLMs implemented in CHICA, using the Arden syntax standard. Studies of CHICA's effectiveness include several published randomized controlled trials.

Conclusions—Our results show that the Arden Syntax standard provided us with an effective way to represent pediatric guidelines for use in routine care. We only required minor modifications to the standard to support our clinical workflow. Additionally, Arden Syntax implementation in CHICA facilitated the study of many pediatric guidelines in real clinical environments.

Correspondence: Vibha Anand, PhD, 9500 Euclid Ave., Cleveland Clinic, Cleveland, OH 44195, USA, anandv@ccf.org.

Publisher's Disclaimer: This is a PDF file of an unedited manuscript that has been accepted for publication. As a service to our customers we are providing this early version of the manuscript. The manuscript will undergo copyediting, typesetting, and review of the resulting proof before it is published in its final citable form. Please note that during the production process errors may be discovered which could affect the content, and all legal disclaimers that apply to the journal pertain.

1. Introduction

Preventive services are a critical part of pediatric care as they assure proper growth and development and early detection of remediable conditions. About half of outpatient visits for children in the US are for health maintenance. Logically, then, scores of preventive care guidelines for children exist. [1-4] Unfortunately, these guidelines are often not followed in routine care.[5] This is for two main reasons. First, guideline based care may often be overlooked because of less important, but more immediate problems, and second, the sheer number of primary care guidelines exceeds what can be done in the typical 18 minute well child visit.[6]

In response to this problem, we developed the Child Health Improvement through Computer Automation system (CHICA) in 2004.[7] CHICA is a computer-based clinical decision support system (CDSS) that has been operating for the last decade in practices of the Eskenazi Health System in Indianapolis, IN. CHICA uses a set of Arden Syntax [8, 9] Medical Logic Module (MLM) or rules to produce a set of encounter documents for each patient visit. The first set is to select 20 questions that the patient's family answers in the waiting room, and the second set is to produce alerts and reminders to the physician.[10, 11] We describe the adaptation of Arden Syntax to support this system [12] and the experiments that demonstrate its effectiveness.

First, we briefly describe CHICA and then our methods to represent a pediatric guideline using Arden Syntax in CHICA in detail. We also describe adaptation of the standard to support our clinical workflow and a brief description of the expected value prioritization scheme that we implemented to execute guidelines (encoded as MLMs) within the context of a patient visit. Lastly, we describe our minor modifications to the Arden Syntax standard and the design and development of our Arden Syntax parser.

2. Methods

2.1 The CHICA system

CHICA is a pediatric CDSS and front end to the Regenstrief Medical Record System (RMRS), an electronic medical record (EMR) established over 30 years ago. [13] However, CHICA is designed to work with any EMR and work is in progress on this front. At a patient's visit, CHICA generates an age-appropriate and patient-specific screening questionnaire that the patient family completes in the waiting room. The results from screening are then combined with information from patient's electronic medical record to generate patient specific recommendations and reminders for the physician for use during the clinical encounter.

The system integrates into clinical workflow seamlessly. At each visit, the patient registration system sends a HL7 (http://www.hl7.org/implement/standards/product_brief.cfm?product_id=143, Accessed: 9 September 2015) Admission Discharge Transfer (ADT) message to CHICA to trigger its clinical decision support. On receipt of this message, CHICA requests a download of the patient's medical record and applies a set of Arden Syntax MLMs [12] or rules to the data in order to generate patient and visit specific

document forms. Because these forms are tailored (or adapted) to the patient but are used to return data to the system, we call them adaptive turnaround documents (ATAD). [10] In essence, ATADs collect information from the patient or caregivers and provide tailored patient specific content to the providers.

The first ATAD form is the pre-screener form (PSF) (Figure 1) and is administered to the patient family in the waiting room. The PSF contains up to 20 yes/no questions that address a wide range of clinical issues (Table 1). Each screening question on the PSF is selected when its corresponding MLM in the system concludes true. The questions are produced in both English and Spanish language with English versions of questions printed on one side and Spanish on the other. [14] Additionally, the nurse or medical assistant can record vital signs and other screening results on the PSF before the physician encounter. In the CHICA version up to now, the PSF was printed as a customized scan-able paper document (leveraging third party software - Automerger Publisher and Teleforms, originally Cardiff Teleform, now owned by HP (<http://www.hpteleform.com/cardiff-teleform>, Accessed: 9 September 2015). We have recently adapted the PSF output to an electronic tablet interface that displays the questionnaire and also toggles between languages. [15] Responses to the PSF questions, entered on tablets or scanned, are returned to the system as coded observations. This triggers CHICA to produce the second ATAD, the physician worksheet (PWS) (Figure 2).

The PWS provides patient specific reminders and prompts to the physician and contains up to six reminders, each corresponding to an MLM in the system. Each reminder consists of a “stem” that explains the purpose of the alert and up to six “leaves” with check boxes. The physicians can record their responses using these check boxes. These responses are stored as structured data in CHICA for future patient visits and follow up care. Starting in June 2015, the scan-able PWS will be replaced by an electronic PWS (ePWS) that is web based and accessible via a link from our EMR. In the ePWS version, clinician responses to check boxes are translated to human readable responses to populate the physician’s note in the EMR. In both versions of the PWS, clinically relevant data e.g. vitals sign, pain and allergy information for a patient are exported to the EMR.

CHICA also produces “Just-in-Time” handouts (JITs) for the clinical encounter (either automatically or on demand). JITs are a set of printed materials that help the physician with patient assessment or education. In general, each JIT is associated with a physician reminder and is used for patient education or decision support. For example, a smoking cessation JIT may be printed for a parent who smokes or an age appropriate developmental screening instrument may be printed for a family that has developmental concerns.

2.2 Pediatric guidelines representation in CHICA

A rule or a group of rules encoded as Arden Syntax MLMs represents a computationally enabled pediatric guideline. Each MLM contains a Knowledge Category that encodes data that need to be retrieved from patient databases, logic that is to be applied to these data, and action that is to be performed by the MLM (e.g. write physician reminder text on PWS) if the logic evaluates TRUE. The MLM also contains Library Category for metadata to provide hyperlink(s) to the corresponding guideline if available. An example of encoding a guideline

for smoking cessation counseling (as implemented in CHICA) is described in Downs et al. [16] Encoding of more complex guidelines using Arden Syntax in CHICA, such as for Developmental screening and ADHD diagnosis and management in school aged children, are described in our other work. [17, 18]

2.3 Translating guidelines into arden syntax

The CHICA knowledge base represents guidelines based functionality in modules. The first module that we developed covered the vast majority of routine preventive services for children. [1] Subsequently, modules have been developed for detecting and managing maternal depression, parental smoking, obesity, adolescent depression, developmental delay, autism, attention deficit hyperactivity disorder, domestic violence, and many others. Please see Table 1 for a complete list.

When a new CHICA module is developed, we typically start with a standard algorithm [19] describing the actions to be taken (Figure 3). Then MLMs are authored to represent different portions of the algorithm. For example in Figure 3, a PSF MLM assesses whether environmental tobacco smoke exposure is documented in the database (box 1) and, if it's not known, the MLM concludes true and writes a question on PSF, asking if there is a smoker in the home. If the family answers yes to this question, this observation (smoker_in_home = yes) is stored in the EMR. Then an MLM for the PWS queries whether there is a smoker in the home by checking the last observation (smoker_in_home). This is generally done during the same patient visit. If smoker_in_home equals yes, the MLM concludes TRUE and writes a prompt to the physician to assess the smoker's readiness to quit. In this way, arbitrarily complex algorithms can be followed over multiple visits. Using the electronic tablet based interface [15], the current version of CHICA is able to support "fillable JITs." These JITs are produced based on screening answers from the PSF in the same patient visit. Due to limitations of scannable paper, the current implementation of the PWS lacks functionality to model multi-stage advice to physicians in the same patient visit. However, work is in progress for implementing such functionality by implementing an electronic version of the PWS.

2.4 Expected value prioritization scheme

CHICA implements an expected value prioritization scheme that gives each MLM a unique priority score. The unique score allows for the most relevant and important questions to be selected for each patient at each visit. The priority score is based on four factors: 1) the probability that a patient (meeting the conditions of the MLM) will have a condition, 2) the seriousness (or disutility) of the condition, 3) the effectiveness of detecting or alerting the physician to the condition, and 4) the evidence (or subjective probability) of the intervention's effectiveness. Each of these terms (probabilities or utilities) can be scaled from zero to one. So the expected value of each question or prompt is the product of the terms. Thus, each MLM is given a priority based on its expected value relative to the other MLMs.[20]

In practical terms, the prioritization scores are developed by a small group of pediatricians. Typically, this is two general pediatricians with training in informatics and health services

research and one or more pediatricians with specialization in the topic of interest. Usually, implemented protocols come from published, evidence based (or best practice) guidelines for which evidence on prevalence and effectiveness are often available. However, when they are not, the expert judgment of the panel is used. Achieving consensus has not been a problem. Likewise, disutility measures can often be derived from existing literature. [21, 22] For most outcomes, a utility for a comparable outcome can be identified. When it cannot be identified, expert judgment is, again, the fall back. Two of the authors (SMD, AEC) work closely with the American Academy of Pediatrics (the most important source of child health guidelines) through their Partnership for Policy Implementation, a project of the Child Health Informatics Center (<http://www2.aap.org/informatics/chic.html>, Accessed: 26 June 2015). Through this connection, it has been possible for our group to keep track of changes in evidence and update the Arden Syntax MLMs as necessary.

The static prioritization scheme described above will eventually be replaced by a more dynamic prioritization scheme in CHICA. [23] Such a scheme will allow for priority scores of each MLM to be computed on the fly, considering individual patient's evidence of risk and other factors mentioned above. The dynamic prioritization scheme will adjust the priority score based on known risk factors at the time of the visit, for example, knowing that a child has anemia would raise the priority of blood lead screening in real-time because anemia increases the risk of lead intoxication.

2.5 Execution of guidelines within the context of a patient visit

The CHICA algorithm for producing each of the ATADs proceeds as follows: 1) CHICA selects all MLMs covering an age range that contains the patient's age; 2) CHICA then orders the MLMs by priority score; 3) Beginning with the MLM with the highest expected value, CHICA evaluates each rule; 4) If the MLM concludes TRUE, then CHICA adds the corresponding question or prompt to the ATAD form; and 5) Moves on to the next MLM until 20 questions (PSF) or 6 prompts (PWS) have been selected for the ATAD at hand.

Creative use of Arden Syntax was essential to implement the clinical workflow described above and run the randomized trials described elsewhere.[17, 18, 24, 25] First, we defined and used a system variable called "mode." The mode variable is read as a data source to an MLM whenever it is invoked. On invocation each MLM tests the mode variable to check whether it has been set in "produce" mode generating questions for the patients or prompts for the physician, or "consume" mode for reading the user (i.e. patient or physician) responses. Using the mode variable, each MLM is able to link the action of displaying a question or prompt with storing the user's response in the EMR. For instance in the MLM fragment below, to assess if a child under 2 years of age watches TV, both the data and logic slots evaluate the mode variable and, based on its value, evaluate different expressions.

```

Data: /* Data Slot */
mode:=read {mode from Parameters}; /* The variables are set by system on call to
evaluate MLM. Parameters is the name of data source
*/
Box1:=read {box1 from Parameters}; /* There are two boxes - box1 and 2 for PSF and up
to six boxes for the six leaves of FWS */
Box2:=read {box2 from Parameters};

If (mode = PRODUCE) then
  AskedRecently := Read Exist (Watches_TV from CHICA) Where it Occurred Within Past 1 year;
Endif;;

Priority: 128;;

Logic: /* Logic slot */
If (mode = PRODUCE) then
  If (AskedRecently = true) then conclude false;
  conclude true;
endif

If (mode = CONSUME) then
  If (Box1=true) then
    CALL storeObs With "Watches_TV","yes"; /*Function call to write structured data to EMR*/
  endif;
  If (Box2=true) then
    CALL storeObs With "Watches_TV","no";
  endif;
endif;;

Action:
write ("Does || firstname || watch some TV most days?");
write ("¿Ve algo de tele || firstname || la mayoría de los días?") At Spanish;
;;
Age_Min: 0 years;;
Age_Max: 2 years;;
end;

```

We also created study variables for clinical trials. CHICA can randomize patients, physicians, or clinics into any number of study arms (see below). Using the study variable, MLMs can be written to test which study arm it is being applied to and conclude true or false accordingly. This allowed us to run randomized controlled trials at the patient level or clustered by physician or clinic. For example, in the MLM snippet below, the study variable (e.g. ADHDStudy) for the patient at hand, is read from the corresponding record in CHICA. If the patient were randomized to the “control” arm (i.e. at his or her first visit at the start of this study, and if he or she met the age coverage) then the MLM concludes false.

```

Data:
If (mode = PRODUCE) then
  study := read Last {ADHDStudy from CHICA} ;
Logic:
If (mode = PRODUCE) then
  If ({study = Control}) then conclude False;

```

2.6 Minor modifications to the arden syntax standard for CHICA workflow

We created three minor modifications to the Arden Syntax standard for use in CHICA workflow. The first modification was for each MLM to specify an age limit with two constructs, Age_Min and Age_Max. For each MLM, these two constructs are stored in special slots at the end of the Action slot in CHICA’s Arden Syntax implementation. Please see the code snippet above. The two constructs expediently select all MLMs covering an age range containing the patient’s age (as described in the execution algorithm above - step 1). The second modification is expansion of the Arden Syntax prioritization score from 100 to 1000 (Please see priority score of 128 for the MLM snippet above). This expansion was needed so that each MLM could be assigned a unique priority score (based on its four factors defined above) for the expected value prioritization scheme implemented in CHICA.

Additionally, we adapted the use of the concatenation operator, vertical pipes (||) in the Arden Syntax standard, to define and implement a specialized local variable (e.g. || variable ||). The intent of this local variable is to define a placeholder to assemble a text string on execution so that customized write statements in the action slot can be written. For instance in the write statement in the MLM fragment below, the variable || firstname || in the action slot is replaced with its assigned value, i.e. patient’s first name (populated by a prior function call) on execution. Please note that in the example below, the use of quotes (“”) to

specify the write statement text is idiosyncratic in CHICA's implementation of the Arden Syntax parser. A newer version of the parser (under development) will rectify this incorrect behavior and the concatenation operator. The new version will adhere to the Arden Syntax standard use. Following the standard usage, the syntax "At Spanish" in the example below specifies where the action text is to be written, i.e. on the Spanish side of the PSF in this example.

```

firstname=call firstName; /* call a procedure */
Action:
write ("Does || firstName || watch some TV most days?");
write ("¿Ve algo de tele || firstName || la mayoría de los días?") At Spanish;

```

2.7 Development of an arden syntax parser

We developed a lexical analyzer and an abstract syntax tree (AST) parser for Arden Syntax grammar [26] version 2.5. These programs were developed from the ground up using an open source tool – Another Tool for Language Recognition (ANTLR version 2.3) - <http://www.antlr2.org> (Accessed: 26 June 2015) and the JAVA programming language. The ANTLR tool can generate a compiler (in JAVA language) from a grammar file and is best suited for LL(k) grammars [27], a computer grammar parsing methodology that supports left-derivation (look ahead up to k tokens) when evaluating ASTs. Therefore, we transformed the Arden Syntax grammar published in [26]. The Backus Naur Form (BNF) of the published grammar is in left to right derivation (look ahead 1) or LALR(1) form, it was transformed to LL(k) form as follows - First we left-factored the grammar and used left-recursion thoughtfully, i.e. considering precedence of operators. For example, the production rule for the <logic_statement> below was left-factored to our use case of Arden Syntax (i.e. conclude statement, or logic_assignment or call statement) and <logic_assignment> was left factored to || variable || = <expr>. Please note that the ANTLR tool also provides syntactic predicates (e.g. use of + or *) and semantic predicates for disambiguation. Please refer to their documentation for details. These predicates allowed us to use the left-most derivation (instead of the right most derivation) of the AST parsing. Below is a snippet of the Arden Syntax BNF (from v2.5) for LALR(1) parsing.

```

<logic_statement> ::=
    /* empty */
    | <logic_assignment>
    | "IF" <logic_if_then_else2>
    | "FOR" <identifier> "IN" <expr> "DO" <logic_block> ";" "ENDDO"
    | "WHILE" <expr> "DO" <logic_block> ";" "ENDDO"
    | "CONCLUDE" <expr>

<logic_assignment> ::=
    <identifier_becomes> <expr>
    | <time_becomes> <expr>
    | <identifier_becomes> <call_phrase>
    | "(" <data_var_list> ")" "=" <call_phrase>
    | "LET" "(" <data_var_list> ")" "BE" <call_phrase>
    | <identifier_becomes> <new_object_phrase>

```

Here is the BNF from above that is suitable for LL(k) parsing using the ANTLR tool. The capital letters are terminal symbols.

```

logic_statement: (conclude_statement | logic_assignment | CALL^ call_phrase) *;
logic_assignment: (ACTION_OP)? identifier_or_object_ref
(ACTION_OP)? (BECOMES | EQUALS) (expr | (CALL^ call_phrase));
identifier_or_object_ref: ID (DOT ID)*;
ID: (('a'..'z'|'A'..'Z') ('a'..'z'|'A'..'Z'|'0'..'9'|MINUS | COMMA | DOT | DIV |
UNDERSCORE|AT) *);
ACTION_OP: "||";

```

Because LL(k) parsing can become ambiguous, our implemented parser supports only a subset of the standard Arden syntax that is required for our use case and clinical workflow. A new parser is being developed using the Arden2Bytecode java library (<http://arden2bytecode.sourceforge.net/>) (Accessed: 26 June 2015) to support all the standard Arden Syntax features. Following its development, the new parser will go through a series of regression tests before deployment in fall of 2015. However, the data presented in here were collected using a parser that implements a subset of the Arden Syntax standard plus our enhancements as described above.

Arden syntax and synchronization of parallel clinical processes—From a clinical process point of view, the ANTLR generated Arden compiler compiles each MLM into its equivalent JAVA code. The Java code is then compiled into a native JAVA class (before run time) by a standard JAVA language compiler. The compiled JAVA class for the MLM is dynamically loaded and executed in CHICA at run time. The latter enables execution of pertinent guideline(s) encoded as MLM(s) for each patient's visit. From a parallel processes point of view, multiple MLMs can be loaded and chained for execution as CHICA processes registration or check-ins from multiple patients simultaneously. For this purpose, CHICA implements parallel processes (a thread pool) that allows for thread-safe execution of the compiled JAVA class for an MLM. Typically a thread in a thread pool is used to process each patient visit such that all MLMs for the patient at hand are executed sequentially in the same thread.

3. Results

CHICA has been a highly successful CDSS and certainly the most studied decision support system in child health care.[12, 16-18, 24, 25, 28-33] First implemented in one community health center in 2004, CHICA has expanded to 7 pediatric clinics affiliated with the Eskenazi Health System in Indianapolis, IN, and has run continuously for over 10 years serving over 44,000 patients to date. Over these last 10 years, CHICA has been used by 755 physicians, residents, fellows, nurse practitioners, nurses and clinical staff such as medical assistants and front desk registration personnel. In an observational study analyzing rates of positive screen, we found that of those screened, CHICA identified an average of 2.3 positive risk factors per child-visit.[28]

Studies of CHICA's effectiveness include several randomized controlled trials (RCT). The first such study showed significant increases in risk assessments for tuberculosis and iron-deficiency anemia. [25] A three armed RCT showed screening in the waiting room produced dramatic increases in the detection of post-natal depression, and providing JIT handouts with resources helped physicians detect it earlier. [24] An RCT of an attention deficit disorder module showed improved physician adherence to standard diagnostic guidelines. [17] An RCT of a guideline-based developmental screening module showed not only increased rates of screening, but detection of developmental delay nearly 8 months earlier. [18] An autism screening module showed dramatic improvements in rates of autism screening. [34] A CHICA based intervention more than doubled rate of self-reported smoking cessation among parents (manuscript in preparation). Studies underway are also looking at detection and management of adolescent risk behaviors and legal issues affecting child health. We

have completed seven randomized controlled trials to date and all have shown significant improvements in the delivery of care and, in some cases, outcomes, including improved parental smoking cessation [16] and earlier detection of developmental delay and asthma cases.[30]

CHICA provides an extensible platform for testing decision support interventions. At the same time, CHICA has accumulated large amounts of structured data through routine use, data that are not typically collected in EMRs in a coded form. These data have provided the basis for eight published observational studies of associations among risk factors. In a cohort of 11,141 children, we showed that the presence of a television (TV) in the bedroom increased the odds of childhood obesity by 13%. [35] Among a group of 3,435 school-aged children 63.5% had a TV in the bedroom and the TV in the bedroom increased their odds of having an ADHD diagnosis by 55% (manuscript in preparation). Among a group of 3,254 infants, 50% viewed a TV screen daily by 2 months of age, 75% by 4 months of age and up to 90% by 2 years of age. [36] Children of depressed mothers had higher odds of TV viewing at a very young age. [36] In a group of 2,441 patients, we found children of mothers with depression were twice as likely to be on psychotropic medications by age 3 [37], and children of mothers with depression who were also exposed to interpersonal violence were four times as likely to have ADHD. [38]

At the time of this writing, there are 429 MLMs or rules implemented in CHICA using the Arden Syntax standard. Broadly, these MLMs are divided into those used for “research” or for “standard” use. Collectively, they represent 41 categories of pediatric guidelines for children, adolescents and young adults 0 to 21 years of age. (Table 1) In the last decade, these MLMs have been fired 6,182,700 times in “produce” mode and 5,334,021 times in “consume” mode for over 42,000 distinct patients. Figure 4 details the number of patients served by CHICA each year for which these rules were fired.

The research MLMs are restricted for use in intervention sites (of the 7 CHICA sites) in research studies while the standard MLMs are used in all sites for routine care. However, in some research studies (depending upon their design) there are control equivalents of standard MLMs. As new pediatrics guidelines become available (e.g. for Ebola screening), new rule(s) are added to the existing MLM library. Similarly, as new clinical studies are started or completed, MLMs are added or retired in CHICA. Typically, when a RCT shows that a guideline (encoded as a set of MLMs) is effective, the MLMs are also implemented in control sites at the end of the trial. Please see Figure 5 for details of the number of MLMs authored every year since the start of the CHICA system in 2004. By executing Arden Syntax code (from the vast library of MLMs) representing many pediatric guidelines, CHICA has enabled evidence-based and guidelines driven care and care processes in routine practice. However, this success did not come immediately.

4. Discussions

Despite our successful implementation in clinical workflow, adherence to evidence based guidelines in routine practice largely depended on the physician and nursing staff. One of our earlier studies showed poor physician adherence.[32] We addressed this issue by

forming a CHICA users group (CHUG) consisting of both physicians and nursing staff to have their input in CHICA related processes. Similarly, we formed a physician expert panel to advice on the process of guidelines implementation. Given the system's demonstrated value to pediatric preventive care and the fact that it only runs as a front end to the Regenstrief medical record system, we believe that CHICA's technical design currently is limited. Therefore, we are re-architecting its clinical decision support capabilities into a series of web services. This will open the possibility of linking CHICA to any EMR and in many health care settings.

A new instance of the CHICA system has been developed to work with a Cerner® EHR implementation at Indiana University Health. In this implementation, the Cerner® system sends an ADT message containing coded observations about the patient to CHICA at the time of registration. Subsequently, Cerner® sends an HL7 message with vitals and anthropometrics entered by the nurse or medical assistant. CHICA delivers the patient/parent questionnaire through a webpage displayed on a tablet and served on the health system's secure wireless network. When the physician sees the patient, s/he can access CHICA's decision support through a web browser opened from within Cerner's PowerNote™ environment. Observations generated by CHICA are delivered as a text blob back to Cerner® in an HL7 message and are inserted into the PowerNote™. This interaction is currently being pilot tested in one clinic.

Regardless of the new development focused on web services for integration with commercial EMRs, the current CHICA system is able to represent a plethora of guidelines and ever growing clinical knowledge using Arden Syntax MLMs successfully.

5. Conclusions

CHICA's success is related to its ability to be useful with virtually every patient who walks in the door. The modules created for CHICA cover the full gamut of preventive services and the most common chronic conditions of childhood. To achieve this, we needed a sophisticated rule-based system with an expected value based prioritization scheme. Because we are committed to standards based health information technology development, we chose Arden Syntax, but minor modifications were needed to accommodate CHICA's specialized functionality. Arden Syntax provided us with a way to not only effectively represent pediatric guidelines but to also study them in a real clinical environment and modify or enhance them as needed. Dozens of publications now demonstrate the value of CHICA, and we are moving forward with distributing it through a web services model.

Acknowledgements

Funding: The CHICA project was supported by grants 1R01HS018453 and R01 HS017939 from the Agency for Healthcare Research and Quality and R01 LM010031Z from the National Library of Medicine.

References

1. Fleming JW. Bright Futures: guidelines for health supervision of children. *MCN Am J Matern Child Nurs.* 1996; 21(6):269–70. [PubMed: 8952277]

2. Scope of health care benefits for children from birth through age 26. *Pediatrics*. 2012; 129(1):185–9. [PubMed: 22129536]
3. Morris PJ. Bright futures for well-child care. Introduction. *N C Med J*. 2013; 74(1):27. [PubMed: 23530375]
4. Geoffrey RS, Cynthia B, Graham AB 3rd, Brown OW, Hardin A, Lessin HR, et al. 2014 recommendations for pediatric preventive health care. *Pediatrics*. 2014; 133(3):568–70. [PubMed: 24567012]
5. Mangione-Smith R, DeCristofaro AH, Setodji CM, Keesey J, Klein DJ, Adams JL, et al. The quality of ambulatory care delivered to children in the United States. *N Engl J Med*. 2007; 357(15):1515–23. [PubMed: 17928599]
6. Yarnall KS, Pollak KI, Ostbye T, Krause KM, Michener JL. Primary care: is there enough time for prevention? *Am J Public Health*. 2003; 93(4):635–41. [PubMed: 12660210]
7. Anand V, Biondich PG, Liu G, Rosenman M, Downs SM. Child Health Improvement through Computer Automation: the CHICA system. *Stud Health Technol Inform*. 2004; 107(Pt 1):187–91. [PubMed: 15360800]
8. Jenders RA, Hripcsak G, Sideli RV, DuMouchel W, Zhang H, Cimino JJ, et al. Medical decision support: experience with implementing the Arden Syntax at the Columbia-Presbyterian Medical Center. *Proc Annu Symp Comput Appl Med Care*. 1995:169–73. [PubMed: 8563259]
9. Jenders RA, Del Fiore G, Kawamoto K, Sailors RM. Standards in clinical decision support: activities in health level seven. *AMIA Annu Symp Proc*. 2008:1244–5. [PubMed: 18998884]
10. Biondich PG, Anand V, Downs SM, McDonald CJ. Using adaptive turnaround documents to electronically acquire structured data in clinical settings. *AMIA Annu Symp Proc*. 2003:86–90. [PubMed: 14728139]
11. Biondich PG, Downs SM, Anand V, Carroll AE. Automating the recognition and prioritization of needed preventive services: early results from the CHICA system. *AMIA Annu Symp Proc*. 2005:51–5. [PubMed: 16779000]
12. Downs SM, Biondich PG, Anand V, Zore M, Carroll AE. Using Arden Syntax and adaptive turnaround documents to evaluate clinical guidelines. *AMIA Annu Symp Proc*. 2006:214–8. [PubMed: 17238334]
13. McDonald CJ, et al. The Regenstrief Medical Record System: 20 years of experience in hospitals, clinics, and neighborhood health centers. *MD Computing*. 1992:9–4.
14. Anand, V.; Biondich, P.; Carroll, A.; Downs, S. Tailoring Interface for Spanish Language: A Case Study with CHICA System; Proceedings of the 1st International Conference on Human Centered Design: Held as Part of HCI International 2009; San Diego, CA: Springer-Verlag; 2009. p. 398-407.
15. Anand V, Mckee SJ, Dugan TM, Downs SM. Leveraging Electronic Tablets for General Pediatric Care A pilot study. *Appl Clin Inform*. 2015; 6(1):15.
16. Downs SM, Zhu V, Anand V, Biondich PG, Carroll AE. The CHICA smoking cessation system. *AMIA Annu Symp Proc*. 2008:166–70. [PubMed: 18998823]
17. Carroll AE, Bauer NS, Dugan TM, Anand V, Saha C, Downs SM. Use of a computerized decision aid for ADHD diagnosis: a randomized controlled trial. *Pediatrics*. 2013; 132(3):e623–9. [PubMed: 23958768]
18. Carroll AE, Bauer NS, Dugan TM, Anand V, Saha C, Downs SM. Use of a Computerized Decision Aid for Developmental Surveillance and Screening: A Randomized Clinical Trial. *JAMA Pediatr*. 2014
19. SMDM. Proposal for clinical algorithm standards. Society for Medical Decision Making Committee on Standardization of Clinical Algorithms. *Med Decis Making*. 1992; 12(2):149–54. [PubMed: 1573982]
20. Downs SM, Uner H. Expected value prioritization of prompts and reminders. *Proc AMIA Symp*. 2002:215–9. [PubMed: 12463818]
21. Madsen KA, Bennett JE, Downs SM. The role of parental preferences in the management of fever without source among 3- to 36-month-old children: a decision analysis. *Pediatrics*. 2006; 117(4): 1067–76. [PubMed: 16585300]

22. Carroll AE, Downs SM. Improving decision analyses: parent preferences (utility values) for pediatric health outcomes. *J Pediatr*. 2009; 155(1):21–5. 25 e1-5. [PubMed: 19394030]
23. Klann JG, Anand V, Downs SM. Patient-tailored prioritization for a pediatric care decision support system through machine learning. *J Am Med Inform Assoc*. 2013
24. Carroll AE, Biondich P, Anand V, Dugan TM, Downs SM. A randomized controlled trial of screening for maternal depression with a clinical decision support system. *J Am Med Inform Assoc*. 2013; 20(2):311–6. [PubMed: 22744960]
25. Carroll AE, Biondich PG, Anand V, Dugan TM, Sheley ME, Xu SZ, et al. Targeted screening for pediatric conditions with the CHICA system. *J Am Med Inform Assoc*. 2011; 18(4):485–90. [PubMed: 21672910]
26. Arden Syntax Workgroup, H.F.S.. Arden Syntax for Medical Logic Systems V2.5. 2004.
27. Aho, AL.; Sethi, R.; Ullman. Compilers: Principles, Techniques and Tools. 2nd2006. MS
28. Anand V, Carroll AE, Downs SM. Automated primary care screening in pediatric waiting rooms. *Pediatrics*. 2012; 129(5):e1275–81. [PubMed: 22508925]
29. Bauer NS, Anand V, Carroll AE, Downs SM. Secondhand Smoke Exposure, Parental Depressive Symptoms and Preschool Behavioral Outcomes. *J Pediatr Nurs*. 2014
30. Carroll A, Anand V, Dugan T, Sheley M, Xu S, SM D. Increased Physician Diagnosis of Asthma with the CHICA Decision Support System. *Pediatric Allergy, Immunology, and Pulmonology*. 2012; 25(3):168–171.
31. Carroll AE, Anand V, Downs SM. Understanding why clinicians answer or ignore clinical decision support prompts. *Appl Clin Inform*. 2012; 3(3):309–17. [PubMed: 23646078]
32. Downs SM, Anand V, Dugan TM, Carroll AE. You can lead a horse to water: physicians' responses to clinical reminders. *AMIA Annu Symp Proc*. 2010; 2010:167–71. [PubMed: 21346962]
33. Downs SM, Carroll AE, Anand V, Biondich PG. Human and system errors, using adaptive turnaround documents to capture data in a busy practice. *AMIA Annu Symp Proc*. 2005:211–5. [PubMed: 16779032]
34. Bauer NS, Sturn LA, Carroll AE, Downs SM. Computer Decision Support to Improve Autism Screening and Care in Community Pediatric Clinics. *Infants & Young Children*. 2013; 26(4):10.
35. Hendrix KS, Carroll AE, Downs SM. Screen exposure and body mass index status in 2- to 11-year-old children. *Clin Pediatr (Phila)*. 2014; 53(6):593–600. [PubMed: 24634433]
36. Anand V, Downs SM, Bauer NS, Carroll AE. Prevalence of infant television viewing and maternal depression symptoms. *J Dev Behav Pediatr*. 2014; 35(3):216–24. [PubMed: 24633063]
37. Bauer NS, Anand V, Carroll AE, Downs SM. Secondhand smoke exposure, parental depressive symptoms and preschool behavioral outcomes. *J Pediatr Nurs*. 2015; 30(1):227–35. [PubMed: 25017291]
38. Gilbert AL, Bauer NS, Carroll AE, Downs SM. Child exposure to parental violence and psychological distress associated with delayed milestones. *Pediatrics*. 2013; 132(6):e1577–83. [PubMed: 24190682]

Highlights

- In 2004 we developed a pediatric computer based clinical decision support system, CHICA, using Arden syntax medical logic modules (MLM).
- CHICA has run continuously for 10 years and has been used by 755 physicians, residents, fellows, nurse practitioners, nurses and clinical staff.
- There are 429 MLMs implemented in CHICA using the Arden syntax standard.
- CHICA has served over 44,000 patients at 7 pediatric clinics in our healthcare system in the last decade and its MLMs have been fired 6,182,700 times to produce and 5,334,021 times to read patient documents.

3630166667		CHICA Pre-Screening		MRN: #99-2									
Height: [] [] [] []	. [] [] in.	Uncooperative / Unable to Screen:		Name: Patient, Ima Great									
Weight: [] [] [] []	kg.	<input type="checkbox"/> Vision	<input type="checkbox"/> Hearing	<input type="checkbox"/> BP	Age: 6 yo DOB: Feb 4 2007								
HC: [] [] [] []	cm.	* Vision Left: 20/[] []			Date: Feb 4 2013								
BP: [] [] [] []	/ [] []	* Vision Right: 20/[] []			Pulse Ox: [] [] [] %								
Temp: [] [] [] []	deg. F	Vision Corrected? <input type="checkbox"/>			<input type="checkbox"/> Sick Visit								
Pulse: [] [] [] []	/min RR: [] [] [] []	* Left Ear @ 25db: [] [] [] []	P [] F []		<input type="checkbox"/> Patient left without treatment								
		* Right Ear @ 25db: [] [] [] []	P [] F []		<input type="checkbox"/> Patient refused to complete form								
					<input type="checkbox"/> Two IDs checked								
<p>Box For Nursing Use Only - Box For Nursing Use Only - Box For Nursing Use Only - Box For Nursing Use Only</p> <p>Parents: Thank you for answering these questions about your child. The answers will help your doctor provide better quality of care. If your child is age 11 or older, he/she should answer the questions privately. Answers are confidential, but if you prefer not to answer that is allowed. You may want to talk about these questions with your doctor.</p> <p style="text-align: center;">Please fill in the circles completely with a pencil or pen.</p> <table border="0"> <tr> <td>Y</td> <td>N</td> <td>Y</td> <td>N</td> </tr> <tr> <td><input type="radio"/></td> <td><input type="radio"/></td> <td><input type="radio"/></td> <td><input type="radio"/></td> </tr> </table>						Y	N	Y	N	<input type="radio"/>	<input type="radio"/>	<input type="radio"/>	<input type="radio"/>
Y	N	Y	N										
<input type="radio"/>	<input type="radio"/>	<input type="radio"/>	<input type="radio"/>										
<input type="radio"/> Is Ima allergic to any medicines?	<input type="radio"/> Is Ima having pain today?	<input type="radio"/>	<input type="radio"/>										
<input type="radio"/> Does Ima take prescription or over-the-counter medicine, herbal medicine or vitamins, or use an inhaler or medicated creams or lotions?	<input type="radio"/> Does Ima have sickle cell disease?	<input type="radio"/>	<input type="radio"/>										
<input type="radio"/> Do you feel safe in your home?	<input type="radio"/> Has your partner kicked, hit, or slapped you?	<input type="radio"/>	<input type="radio"/>										
<input type="radio"/> Does Ima OFTEN make careless mistakes or not pay close attention to details, that is causing problems at home or school?	<input type="radio"/> Does Ima OFTEN have difficulty remaining seated when asked to do so, that is causing problems at home or school?	<input type="radio"/>	<input type="radio"/>										
<input type="radio"/> Does Ima OFTEN have a hard time paying attention to tasks or play, that is causing problems at home or school?	<input type="radio"/> Does Ima always wear a helmet when riding her bike or tricycle?	<input type="radio"/>	<input type="radio"/>										
<input type="radio"/> Do you have a working smoke detector in your home or apartment?	<input type="radio"/> Do you sometimes need to have someone help you when you read material from your doctor or pharmacy?	<input type="radio"/>	<input type="radio"/>										
<input type="radio"/> Are you confident filling out medical forms by yourself?	<input type="radio"/> Do you have at least 10 children's books in your home?	<input type="radio"/>	<input type="radio"/>										
<input type="radio"/> Does Ima have a TV in her room?	<input type="radio"/> Does Ima usually watch TV or computer more than 2 hours a day?	<input type="radio"/>	<input type="radio"/>										
<input type="radio"/> Does anyone in Ima's home smoke?	<input type="radio"/> Does Ima ever swim or play around any water (lake, stream, pool, or ocean) without adult supervision?	<input type="radio"/>	<input type="radio"/>										
<input type="radio"/> Has your partner or another adult threatened or hurt your children?	<input type="radio"/> Does Ima have asthma or wheezing, cough or breathing problems that won't go away or keep coming back?	<input type="radio"/>	<input type="radio"/>										

Preguntas en español al otro lado.

Figure 1. Pre-screening form (PSF)

2253433574 **CHICA Physician Encounter Form** #99-2

Patient: Patient, Ima Great (F) **MRN:** #99-2 **A Vital Signs:**
DOB: 02/04/07 **Age:** 6 yo **Date:** Feb 4 2013 **Height:** in. (%)
Doctor: Other **Time:** 4:51PM **Weight:** kg.(%)
Additional notes on back... **BMI:** (%)
Two ID's Checked **Head Circ:** cm.(%)
Informant: **Temp:** F
Pulse:
RR:
BP: ()
Pulse Ox: %
Hear (L): Hear (R):
Vision (L): U
Vision (R): U
Weight: lb.
*** = Abnormal, U = Uncooperative**

Physical Exam: **Neck** **History / Exam Comments:** **Additional notes on back...**
General: **CC:** **Two ID's Checked**
Head: **Informant:** _____
Skin:
Eyes:
Ears:
Nose / Throat:
Teeth / Gums:
Nodes:
Chest / Lungs:
Heart / Pulses:
Abdomen:
Ext. Genitalia:
Back:
Neuro:
Extremities:
Legs: * = Previously Abnl
 > = Needs Examination

medications: NONE **Allergies:** _____
Pin (8-10): _____

INSTRUCTIONS: Check all applicable boxes. COMPLETELY fill space to right of each box to "uncheck" misfilled boxes.

TV: Ima has a TV in bedroom. watches >2hrs of TV per day, so the following advice is recommended. Ima has hard time paying attention. makes careless mistakes, has difficulty remaining seated. This Sx may imply ADHD. CPT 98110

Advise <2hrs TV/computer per
 Advise to remove TV from

H&P with respect to ADHD Parent Vanderbilt and scan now
 Vision and hearing screens Teacher Vanderbilt and fax ASAP
 No school/home prob, not ADHD Sched flu in 2-3 weeks

Family says patient has not seen a dentist. Remind family that Ima should brush teeth twice daily, and that Ima should see a dentist every year. According to AAP guidelines, Ima should have vision screening today, but we have no record. Please screen vision now.

Reminded child to brush BID Advised no food before bed Screen done ----> Passed
 Advise to see dentist Gave dentist handout Failed
 Mouth/teeth healthy on exam Abnl oral exam (see note) Unable to screen Not indicated

Guns at home or in homes where a child visits or is cared for increase the risk of injury to children. The AAP says removing guns from the home is the best way to prevent injury. If guns must be kept, they should be stored. The AAP has age-specific recommendations for the prevention of childhood burns and fires. Please review the following, and check those you review.

No guns in home Provided gun handout Working smoke detector Store matches/lighters safely
 Guns in home -> Store unloaded, locked Test batteries monthly Teach child plan if alarm rings
 Asked about guns at friends' Store away from ammo Rec no smoking in house Teach escape plan (>= 2 exits)

Assessments and Plan: Medication Education Performed and/or Counseled on Vaccines: Y N N/A
 ___The medical student acted as a scribe for this note.

Staff: _____ Signature: _____

Figure 2. Physician Worksheet (PWS)

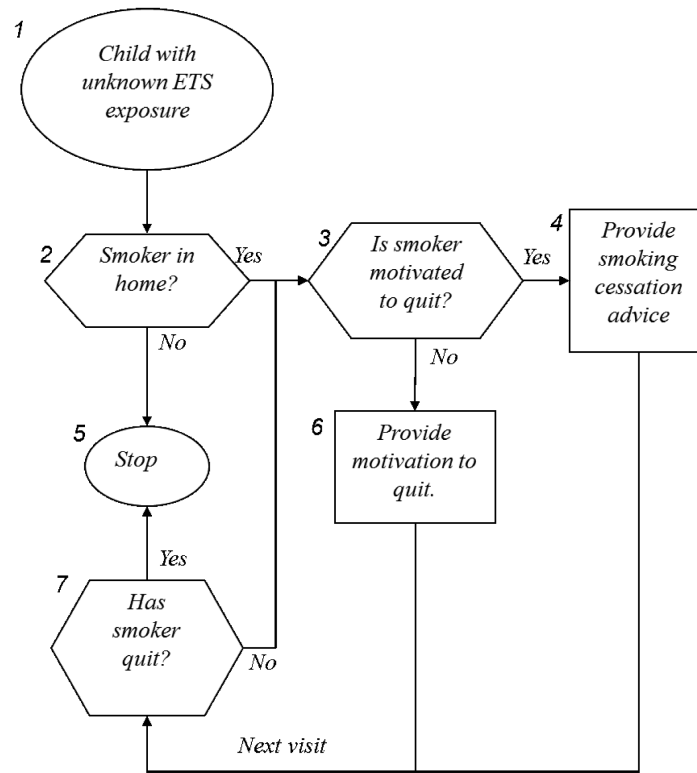


Figure 3.
Example of new module development

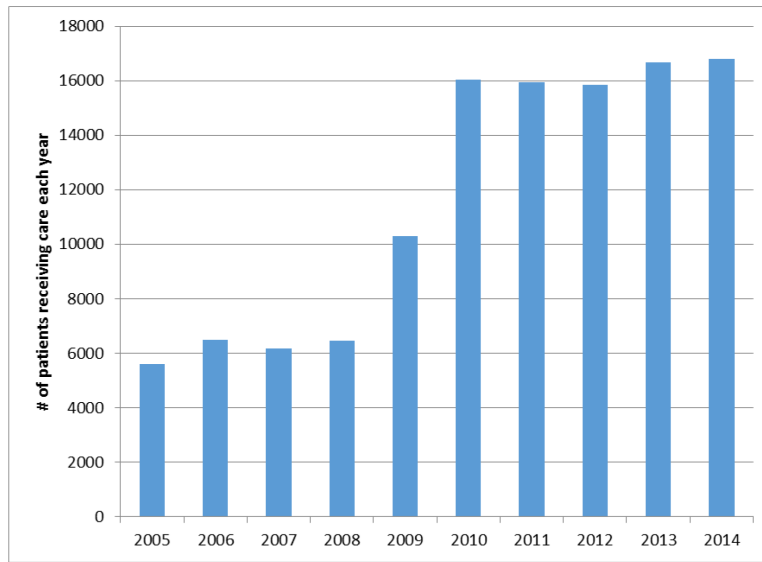


Figure 4. Distinct patients receiving care using CHICA MLMs each year

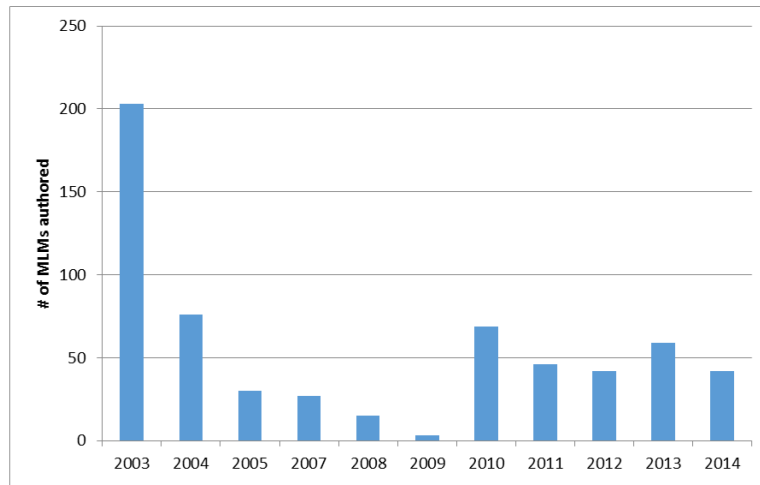


Figure 5.
CHICA MLMs authored (by year)

Table 1

MLM or Rule categories in CHICA

	Category	# of rules or MLMs
1	Injury prevention	90
2	Developmental study	41
3	Developmental	33
4	ADHD	31
5	Adolescent depression	28
6	Adolescent substance use	23
7	Type 2 Diabetes	19
8	Adolescent sex	18
9	Medical Legal Partnership	18
10	Asthma	16
11	Dental	16
12	Autism	15
13	Obesity	14
14	Lead Screening	13
15	School	12
16	Maternal depression	10
17	Environmental tobacco	9
18	Tuberculosis	8
19	Adolescent smoking	7
20	Sickle cell	7
21	Abuse	6
22	Anemia	6
23	Cholesterol	6
24	Car seat	5
25	Feeding	5
26	Television	5
27	Allergy	4
28	Breast feeding	4
29	Literacy	4
30	Vision	4
31	Blood Pressure	3
32	Ebola screening	3
33	Family life	3
34	Hearing	3
35	Medication reconciliation	3
36	Pain	3
37	HPV	2

	Category	# of rules or MLMs
38	Newborn Screening	2
39	WIC	2
40	Confidentiality	1
41	Sleep	1

Author Manuscript

Author Manuscript

Author Manuscript

Author Manuscript