

THE ROLE OF NURSES IN THE COMMUNITY

Lisa Sledge

Nurse Educator for Nurse Family Partnership



Nurse-Family
Partnership

Helping First-Time Parents Succeed®

Goodwill of Central & Southern Indiana (GCSI)



"There is a magic window during pregnancy...it's a time when the desire to be a good mother and raise a healthy, happy child creates motivation to overcome incredible obstacles including poverty, instability or abuse with the help of a well-trained nurse."

David Olds, Ph.D., Founder,
Nurse-Family Partnership



NFP Nurses support the **patient care** of health providers across Indiana.



NFP Nurses

BSN prepared
Registered Nurses

Specializing in
Community Health
Nursing Practice

Receive Extensive
Education in the
Model





NFP Goals

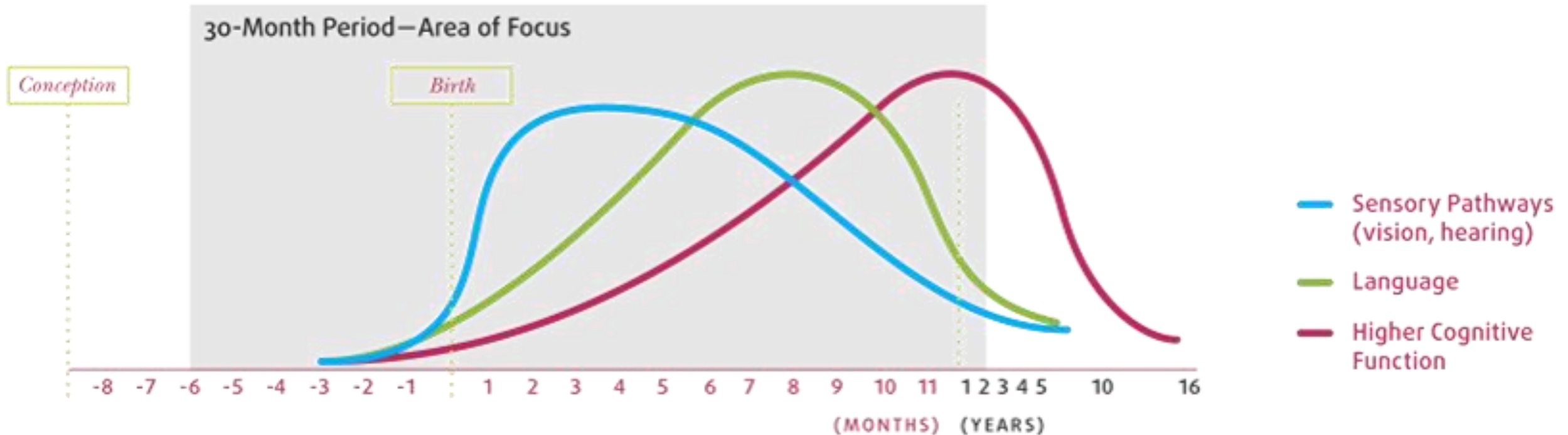
Improve Pregnancy Outcomes

Improve Child Health
and Development

Improve Economic
Self-Sufficiency of the Family

HUMAN BRAIN DEVELOPMENT

Synapse formation dependent on early experiences



Source: Nelson, C.A., *From Neurons to Neighborhoods* (2000).
Shonkoff, J. & Phillips, D. (Eds.)

ROLE OF A GOODWILL NFP NURSE

- Visit client's in their home
- Walk alongside new moms during pregnancy and until the child is 2 years old.
- Provide support, health education, health assessment, resource finding, anticipatory guidance,
- Help moms develop a strong relationship with baby!



Home Visit Overview

Assessment Tools

- Maternal Health history
- Dyadic Assessment of Naturalistic Caregiver-child experiences (DANCE)
- Ages & Stages Questionnaire (ASQ)
- Depression Screen (EPDS, PHQ-9, GAD-7)
- Interpersonal violence Screen
- Substance Abuse Disorder Screen

Mental Health Nurse Consultant on Staff



RN ASSESSMENT

Maternal

- Blood pressure
- Demographic data
- Strengths & Risks Assessment Tool
- Subjective and Objective nursing assessment (PIH, GDM)

Infant/Child

- Weight, Length, head circumference
- Birth information
- Health history
- Home environment & safety



HOME VISIT OVERVIEW

Personal Health

Health Maintenance Practices
Nutrition and Exercise
Substance Use
Mental Health Functioning

Environmental Health

Home, Work, School,
Neighborhood

Life Course Development

Family Planning
Education and Livelihood

Maternal Role

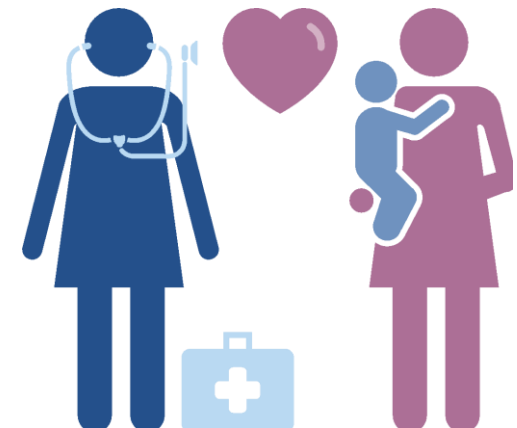
Mothering Role
Physical Care
Behavioral and Emotional Care

Family and Friends

Personal Network Relationships
Assistance with Childcare

Health and Human Services

Service Utilization





Theories in Nursing Practice

SELF EFFICACY:

People are more likely to engage in a desirable behavior if they believe it will produce a desired outcome, and believe they can successfully carry it out.

HUMAN ECOLOGY:

Parenting is influenced by the larger social context in which parents and children live. This includes relationships with family, friends, communities, and cultures.

ATTACHMENT:

Children who receive sensitive and responsive parenting are more likely to become sensitive and responsive parents themselves.

NFP Nurses are making a difference in the lives of Indiana moms and babies

[See how NFP nurses are making a difference](#)



NFP INDIANA

2017 Outcomes



On average, NFP moms began prenatal care at 9 weeks.

The American College of Obstetrics and Gynecology benchmark is 12 weeks.



89.5% of babies born at a healthy weight (5.5 pounds or more).

Healthy People 2020 goal is 92%.



91.3% of babies born at full term (37 or more weeks gestation).

Healthy People 2020 goal is 89%.



16% of moms self-reported tobacco use during pregnancy.

69% quit tobacco use before their child's birth.

30% reduced tobacco use before their child's birth.



89.9% of moms initiated breastfeeding.

38.9% of babies still breastfeeding at 6 months.

23.3% at 12 months.



95.6% of babies up-to-date with immunizations at 6 months.

95.9% up-to-date at 12 months.

95.3% up-to-date at 24 months.



NFP INDIANA

2017 Program Participants

INTAKE DEMOGRAPHICS

MEDIAN AGE: **25**

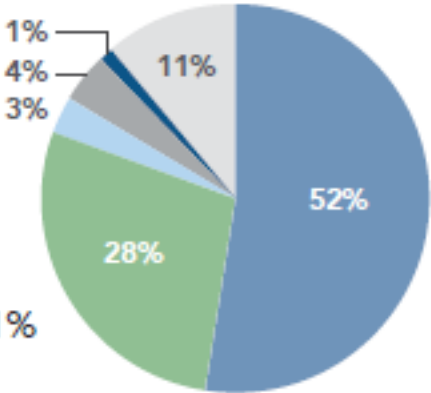
HIGH SCHOOL DIPLOMA: **61%**
(OR EQUIVALENT)

ETHNICITY: **21% HISPANIC**

MARRIED: **12%**

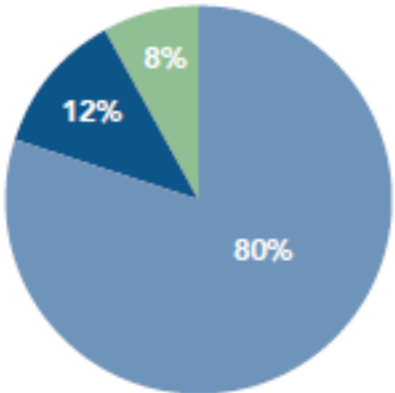
RACE

- African American 52%
- White 28%
- Multiracial 3%
- Asian 4%
- American Indian 1%
- Declined to self-identify 11%



PRIMARY LANGUAGE

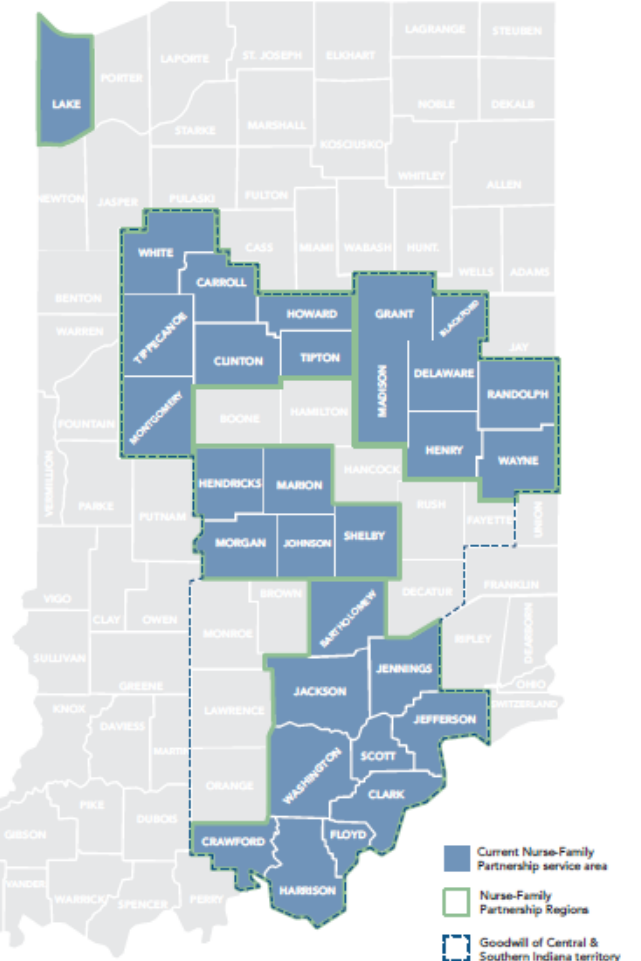
- English 80%
- Spanish 12%
- Other 8%
(Burmese, Chinese, Swahili)



NFP INDIANA SERVICE AREA AND REACH



NURSE-FAMILY PARTNERSHIP®
GOODWILL OF CENTRAL & SOUTHERN INDIANA



For More Information

Call:

Goodwill NFP office

317-524-3999

Online:

goodwillindy.org/nfp

Lisa Crane MSN, RN

Senior Director:

lcrane@goodwillindy.org

Lisa Sledge MSN, RN, CLC, TTS

Clinical Nurse Educator, NHV:

lsledge@goodwillindy.org

